



## Kiwi Street, Salford

**Client:** Caddick Construction

**Location:** Salford, Manchester

**Value:** £ 1.42m



### Project Specifics

The scheme is the construction of 63 apartments in a single block which varies in height between 4, 5 and 8 stories, consisting of 47nr one bed apartments, 14nr two bed apartments and 2nr wheelchair units.

The building has eight stories on the side adjacent to Churchill Way and then it steps down to five stories and then four as it moves closer to neighboring two-story buildings.

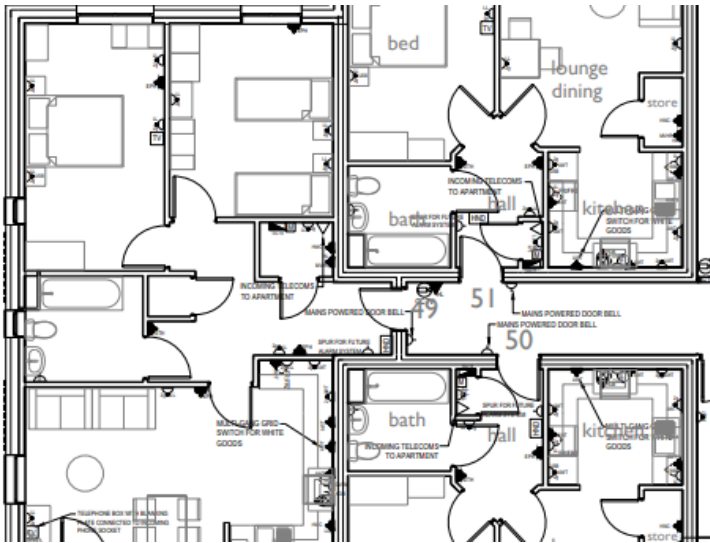
There are communal gardens, 25 car parking spaces, including two disabled and a 30-bike capacity cycle storage with charging points for three mobility scooters.

### Technical Characteristics

The GBS role on the scheme was for the design and build and installation of the mechanical and electrical services.

This includes on the mechanical elements: ventilation, sprinkler system, hot and cold pipework, drainage and bathrooms and sanity wear.

The electrical elements include, lighting, power, data, fire and security, CCTV, and access control.



### Project Successes

The development was completed in February 2024. Initially our client had budget issues of which Gallant Building Services worked closely with the client's design team to value engineer a solution that worked within their budgets.

A key element overcome on the project was the inclusion of a temporary generator to enable the building handover due to the complications and delays of the actual generator specified being manufactured in Italy.